

## Membership Benefits

- \* Use of our full-service, 25,000 square foot facility; including weight and cardiovascular workout rooms, steam room, sauna, whirlpool, lockers, showers and spa amenities.
- \* 15% discount on all treatments and spa retail items.
- \* Packages with tennis privileges include tennis court fees, discounted rates on instructional clinics and private lessons, and 15% discount on tennis retail items.
- \* Unlimited fitness classes.
- \* Validated self-parking.
- \* Private spa entrance.
- \* Optional features available for an additional cost:
  - House Account charging privileges.
  - Locker rentals.
  - Valet parking.

## Membership Rewards Program

For every referred yearly membership, receive a complimentary 50-minute treatment of your choice (maximum value \$150).

\* Restrictions may apply.

Please call 886-2828 for details.

*Rates and Benefits subject to change.*

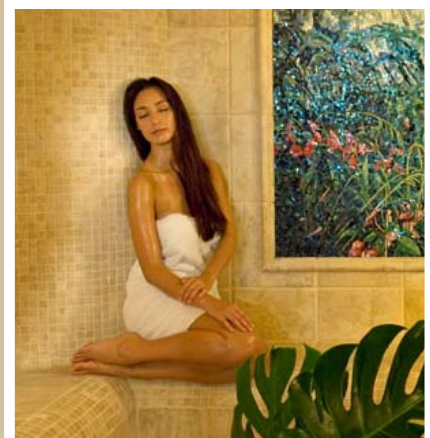
*Restrictions may apply.*

*Proof of Hawaii State residency required.*



KOHALA  
— SPA —

## Resident Memberships



Kohala Spa  
Hilton Waikoloa Village  
69-425 Waikoloa Beach Drive  
Waikoloa, Hawaii 96738  
Phone: (808) 886-2828

[www.KohalaSpa.com](http://www.KohalaSpa.com)  
[www.HiltonWaikoloaVillage.com](http://www.HiltonWaikoloaVillage.com)

Hilton  Waikoloa Village®

## Resident Memberships

	Yearly Rate	Monthly Rate
<b>SINGLES</b>		
<b>PACKAGE A</b>	\$1,175.00	\$123.00
Spa & Fitness Facility Unlimited Fitness Classes Tennis Facility Pool Access*		
<b>PACKAGE B</b>	\$1,057.00	
Spa & Fitness Facility Unlimited Fitness Classes Pool Access*		
<b>PACKAGE C</b>	\$705.00	\$74.00
Spa & Fitness Facility Unlimited Fitness Classes		

## COUPLES

<b>PACKAGE A</b>	\$1,850.00	\$193.00
Spa & Fitness Facility Unlimited Fitness Classes Tennis Facility Pool Access*		
<b>PACKAGE B</b>	\$1,665.00	
Spa & Fitness Facility Unlimited Fitness Classes Pool Access*		
<b>PACKAGE C</b>	\$1,110.00	\$116.00
Spa & Fitness Facility Unlimited Fitness Classes		

## FAMILIES

<b>PACKAGE A</b>	\$2,050.00	\$214.00
Spa & Fitness Facility Unlimited Fitness Classes Tennis Facility Pool Access*		
<b>PACKAGE B</b>	\$1,845.00	
Spa & Fitness Facility Unlimited Fitness Classes Pool Access*		
<b>PACKAGE C</b>	\$1,230.00	\$129.00
Spa & Fitness Facility Unlimited Fitness Classes		

## Resident Memberships

	Yearly Rate	Monthly Rate
<b>SENIOR SINGLES</b>		
<b>PACKAGE A</b>	\$1,070.00	\$112.00
Spa & Fitness Facility Unlimited Fitness Classes Tennis Facility Pool Access*		
<b>PACKAGE B</b>	\$963.00	
Spa & Fitness Facility Unlimited Fitness Classes Pool Access*		
<b>PACKAGE C</b>	\$642.00	\$67.00
Spa & Fitness Facility Unlimited Fitness Classes		

## SENIOR COUPLES (Age 55 and over)

<b>PACKAGE A</b>	\$1,560.00	\$163.00
Spa & Fitness Facility Unlimited Fitness Classes Tennis Facility Pool Access*		
<b>PACKAGE B</b>	\$1,404.00	
Spa & Fitness Facility Unlimited Fitness Classes Pool Access*		
<b>PACKAGE C</b>	\$936.00	\$98.00
Spa & Fitness Facility Unlimited Fitness Classes		

## WELLBEING

<b>FITNESS CLASSES</b>	10 for \$90
<b>PERSONAL TRAINING</b>	3 for \$225 5 for \$325 10 for \$651

\*Pool access applies to yearly memberships only.